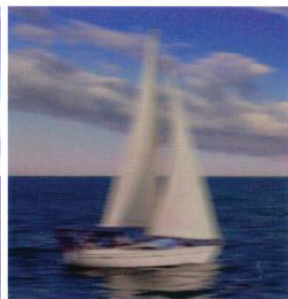


Healthy Eye



Eye with Cataract



Simulated vision

IS YOUR VISION BLURRY
OR CLOUDY?

ARE YOU BOTHERED BY
HEADLIGHT GLARE WHEN
DRIVING AT NIGHT?

If so, you may have **cataracts**.

Consult your doctor to be sure.

If you are exploring treatment
options, the **TECNIS® Symfony**
Extended Range of Vision
intraocular lens (IOL) may be the
right choice for you.

TECNIS® Symfony IOL is the
first and only **presbyopia-**
correcting extended range of
vision lens for patients with or
without **astigmatism**.

TECNIS® Symfony

EXTENDED RANGE OF VISION IOL.
IS IT RIGHT FOR YOU?

Ask your eye doctor about **TECNIS® Symfony** IOL.

TECNIS® Symfony Extended Range of Vision
lenses provide **high-quality vision** from
near to far, in all lighting conditions.²

TECNIS® Symfony Extended Range of
Vision IOL **helps correct presbyopia**,
while **TECNIS® Symfony** Toric Extended
Range of Vision IOL **also helps correct**
astigmatism. Both lenses offer **high**
spectacle independence at far,
intermediate and near distances.¹

This information is for educational purposes only. Talk
to your eye doctor about any symptoms you may be
experiencing and find out if the **TECNIS® Symfony**
Extended Range of Vision IOL is right for you.

 **Abbott**
Medical Optics

References

1. 166 Data on File. Extended Range of Vision IOL 3-Month Study Results (NZ).
2. TECNIS® Symfony DfU, Doc. #Z310939, Rev. 03.
3. 175 Data on File. Correction of chromatic aberration of the TECNIS Symfony IOL.

TECNIS® Symfony Extended Range of Vision Lenses are indicated for primary implantation for the visual correction of aphakia and preexisting corneal astigmatism in adult patients with and without presbyopia in whom a cataractous lens has been removed by extracapsular cataract extraction, and aphakia following refractive lensectomy in presbyopic adults, who desire useful vision over a continuous range of distances including far, intermediate and near, a reduction of residual refractive cylinder, and increased spectacle independence. These devices are intended to be placed in the capsular bag. Potential adverse events during or following cataract surgery with implantation of an IOL may include but are not limited to: endophthalmitis/intraocular infection, hypopyon, IOL dislocation. For a complete listing of precautions, warnings, and adverse events, talk to your doctor.

TECNIS and TECNIS SYMFONY are trademarks owned by or licensed to Abbott Laboratories, its subsidiaries or affiliates.

AMO Australia Pty. Limited, Level 3, Building 2, 20 Bridge Street, Pymble NSW 2073.

AMO Australia Pty. Limited (Incorporated in Australia) PO Box 401, Shortland Street, Auckland, 1140.

©2014 Abbott Medical Optics Inc.

www.AbbottMedicalOptics.com

PP2014CT0075

 **TECNIS®**
Symfony
Extended Range of Vision IOL

IT'S A NEW BEGINNING
FOR CATARACT PATIENTS...

Now you can benefit from a full range
of vision thanks to **TECNIS® Symfony**
Extended Range of Vision intraocular lens.

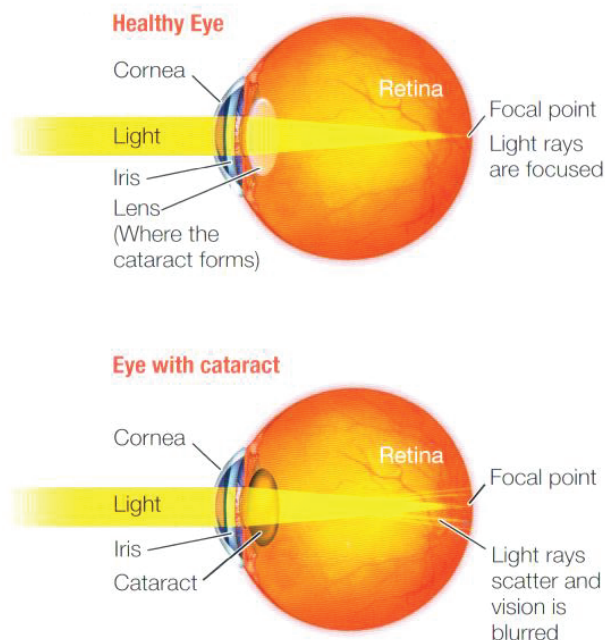


 **Abbott**
A Promise for Life

WHAT IS A CATARACT?

The natural lens of the eye is made mostly of water and protein. Sometimes, as the eye ages, some of the proteins undergo changes, causing the eye's lens to become discolored and clouded. This is called a cataract.

When this occurs, light passing through the eye becomes scattered and unfocused. The result is that all objects, near and far, become blurry. The only treatment for a cataract is removal of the natural lens and implantation of an intraocular lens (IOL). This restores the eye's ability to have light pass unobstructed through to the retina.



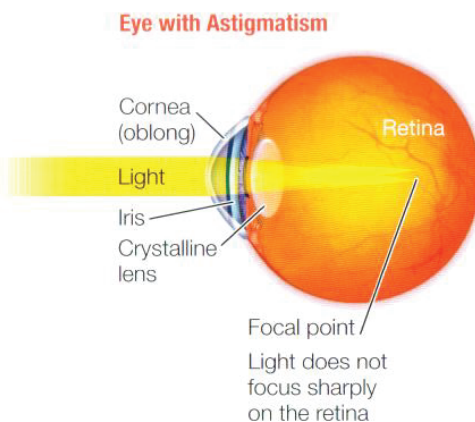
WHAT IS PRESBYOPIA?

As we age, the natural lens in our eye becomes less flexible. This lack of flexibility, called presbyopia, compromises the eye's ability to switch from one focal point (e.g., distance) to another (e.g., near).

The practical effect of presbyopia is that we lose our ability to read or see close objects without reading glasses or bifocals.

WHAT IS ASTIGMATISM?

In a healthy human eye, the cornea is round in shape like a basketball. Astigmatism occurs when the cornea is shaped more like a football. When light passes through a cornea with astigmatism, the image does not focus sharply on the retina, causing blurred vision.



THE TECHNOLOGY BEHIND THE **TECNIS®** *Symfony* IOL.

TECNIS® Symfony Extended Range of Vision IOL is an advanced implantable lens, providing high-quality vision in any lighting condition, from near to far distances— and everything in between.¹

TECNIS® Symfony Extended Range of Vision IOL uses two advanced technologies that work together to:

1. Elongate the focus of the eye to provide the extended range of vision.²
2. Correct chromatic aberration (color distortion) to provide sharp vision in all lighting conditions.³

97% of patients in a recent study would elect to have the **TECNIS®** *Symfony* lens implanted again.¹